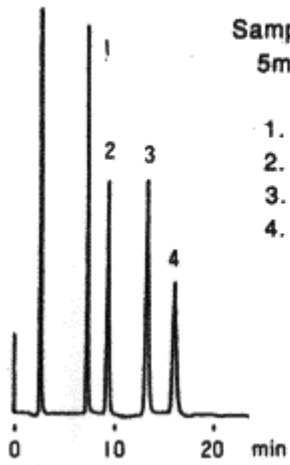
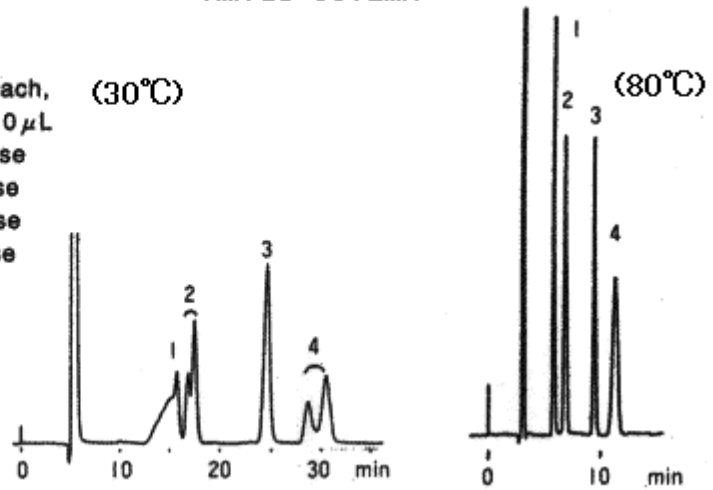


NH2P-50 (30°C)



Sample :  
5mg/mL each, (30°C)  
10  $\mu$ L  
1. Fructose  
2. Glucose  
3. Sucrose  
4. Maltose

Amide column



Column : Shodex Asahipak NH2P-50 4E,  
Amide column from another manufacturer (4.6mmID\*250mm each)  
Eluent : CH<sub>3</sub>CN/H<sub>2</sub>O=75/25  
Flow rate : 1.0mL/min  
Detector : Shodex RI  
Column temp. : 30°C